



Cultural Site Fact Sheet

Cultural site name	CIVIC MUSEUM OF SACRED ART
Type of site	Museum
Address	Piazza duomo,1
City	Pistoia
Contacts	tel. +39 0573 371296 musei@comune.pistoia.it
Website	http://musei.comune.pistoia.it/rete-museale/museo-civico-in-palazzo-comunale/
WCAG 2.1 compliant accessible website	NO

TESTED BY: [Handy Superabile Social Promotion Association](#) in summer 2024

Please note The following information refers to the date of verification shown at the bottom of each sheet. **The Association** is not responsible for any significant changes made by the property after the visit.

Summary

Cultural Site Sheet.....	1
Description.....	2
Arrival at the property.....	3
Private/public parking.....	3
Route from the car park to the entrance	4
Reception and reception	6
Itineraries	8
YES only of the Town Hall	8
Services	14
Additional elements.....	14
Toilets for guests with reduced mobility	14
Medical practices/healthcare facilities.....	15

Project carried out with the contribution of the





Description

The Civic Museum of Ancient Art is the first and largest museum institution in the city, of late nineteenth-century origin, open to the public since 1922 in the Palazzo Comunale, the fourteenth-century Palazzo degli Anziani, of which it occupies the most prestigious spaces. The entire artistic history of Pistoia from the twelfth to the twentieth century is represented through over 300 works including paintings, sculptures and objects of applied art (goldsmiths, glass, ceramics), connected to the historical, religious, architectural and urban fabric from which they come





General information

Opening and closing period	All year round
Times	Summer from Tuesday to Friday 15/19 and Saturday, Sunday and holidays 11/19 Winter from Tuesday to Friday 10 am to 2 pm and Saturday Sunday and holidays 10 am to 6 pm Christmas and New Year's Eve 16/19 Closed on Mondays Hours may vary annually
Ticket cost	Full price 3,50 €
Reductions	reduced 2 € Access is free for the person with disabilities for his or her companion.
Online purchase	NO
Pet access	

Arrival at the property

Private/public parking

Presence of private parking	NO
Presence of parking space reserved for people with disabilities	NO
Public parking nearby	YES
Type of flooring in the public car park	asphalt
Presence of parking space reserved for people with disabilities	YES 2 reserved parking spaces in via Pacini about 100 meters away
Eventual notes	





2 reserved parking spaces in via Pacini



From the reserved parking spaces go up to via Ripa of the community

Route from the car park to the entrance

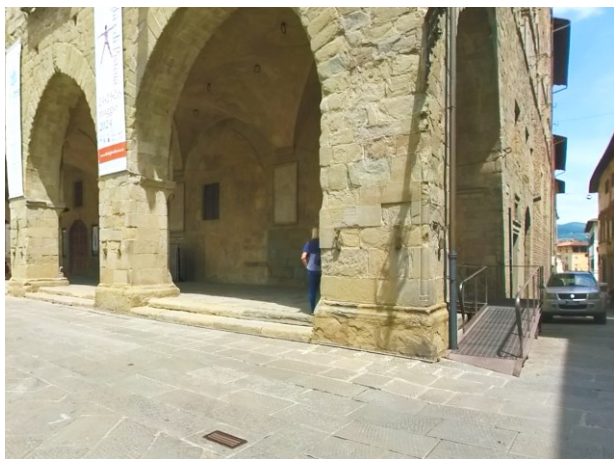
The property can be reached from the car park	via ascent in via Ripa of the community
There are indicators and tactile maps	NO
There is an accessible entrance	YES secondary entrance in Vicolo del Duomo
How to access the site	<input checked="" type="checkbox"/> via an external ramp 320 cm long, 100 cm wide and average slope 8%, with handrails on both sides; entrance door accessible via threshold with external connecting ramp and bevelled internal step
Useful width of door/entrance gate	Above 90 cm
Type of door	with 2 doors that can be opened inwards
Eventual notes	



Project promoted by



Regione Toscana



Project carried out with the contribution of the



Presidenza del
Consiglio dei Ministri
Ministro per la disabilità



	<p>From the square, entering the internal cloister of the town hall, to reach the elevator you have to overcome a ramp 350 cm long, > 90 cm wide, with a slope of 8.3% and handrail on the left. Lift door width 90 cm, car width and depth 121 X 134 cm, call button height 124 cm, highest key of the internal keypad 142 cm high and braille and relief keys</p>

Reception

How to access	flat
Priority access for visitors with disabilities	YES
Orientation signs	<input checked="" type="checkbox"/> Signage with contrasting icons and colors to provide information on accessibility





	<input checked="" type="checkbox"/> Orientation signs according to the ISO23601 Safety Identification – Escape and Evacuation Plan Signs <input checked="" type="checkbox"/> directional signs placed at 140/170 cm with contrasting colors <input checked="" type="checkbox"/> Signs identifying rooms and paths placed at 140/170 cm with contrasting colors
Type of information material	<input type="checkbox"/> Braille guides <input type="checkbox"/> guides in large print <input type="checkbox"/> Facilitated Language Guides (AAC) <input type="checkbox"/> Audio guides <input type="checkbox"/> video guides in LIS or subtitles <input type="checkbox"/> tactile maps <input type="checkbox"/> QR code <input type="checkbox"/> imapp
A cloakroom accessible to visitors with motor disabilities is available	YES with lockers
Multilingual staff	YES
The staff followed a training course on welcoming people with different disabilities	NO
Presence of sign language interpreters	NO
Reception desk height	102 cm
The following aids are available for visitors with disabilities	<input type="checkbox"/> manual wheelchair <input type="checkbox"/> Crutches <input type="checkbox"/> Magnifier <input type="checkbox"/> Tablet with pre-installed app

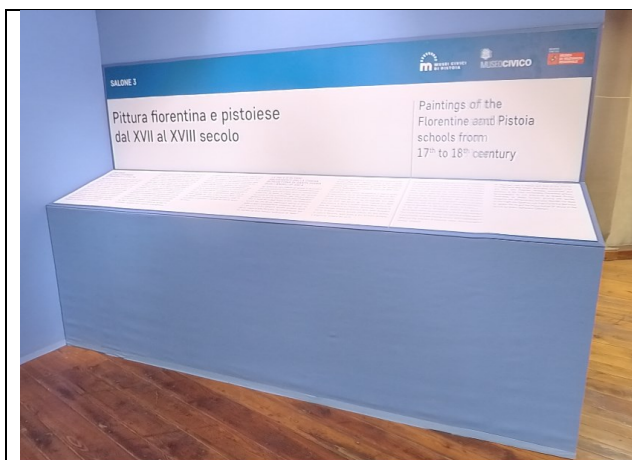




Museum tour

Presence of maps	YES
Touch indicators and visual-touch maps	NO
Presence of didactic panels	YES
Audio guide	NO
Touch Models	YES only of the Town Hall
Multimedia workstations accessible from a seated position	NO
Routes dedicated to children	YES
Stopping points	YES
Route spread over several floors	SI num. 3 floors accessible by elevator
Access to the starting point of the route	From the reception access with a ramp 50 cm long, > 90 cm wide, slope 13-14%,
How to access the rooms	<input checked="" type="checkbox"/> flat or with ramps
Usable width of door/entrance gate/corridor	Above 90 cm
Room Identification	by means of a sign placed cm from the ground with text color on background color
Bulletin board/information panels and captions	<input checked="" type="checkbox"/> captions positioned at cm _78-118 from the ground



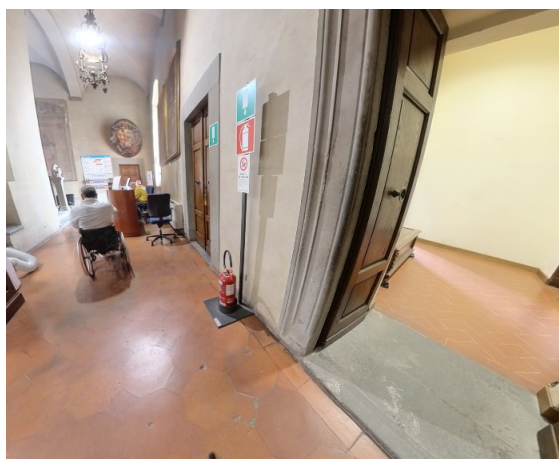


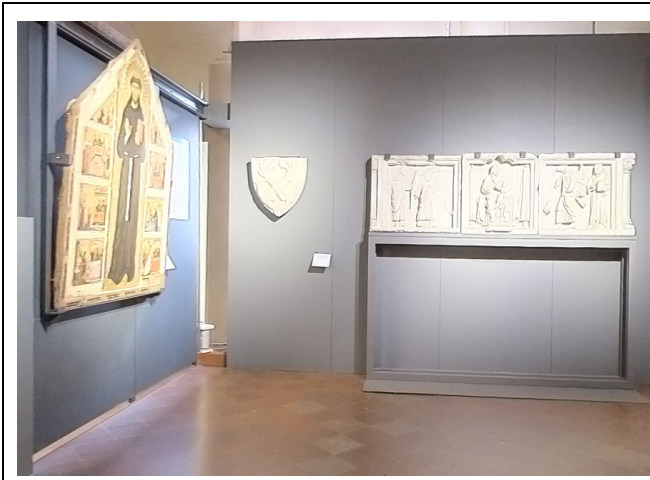
- Shadow-free fonts and serifs
- easy-to-read text (AAC)
- Braille or relief panel positioned 60-100 cm from the ground
- Nicely contrasted black font on white background
- Panels also written in English



Exiting the elevator on the first floor, past the reception, we reach the starting point of the museum itinerary on the first floor, accessible via a ramp 160 cm long, > 90 cm wide and 12% slope

The museum itinerary winds between the first and second floors of the Palazzo degli Anziani.



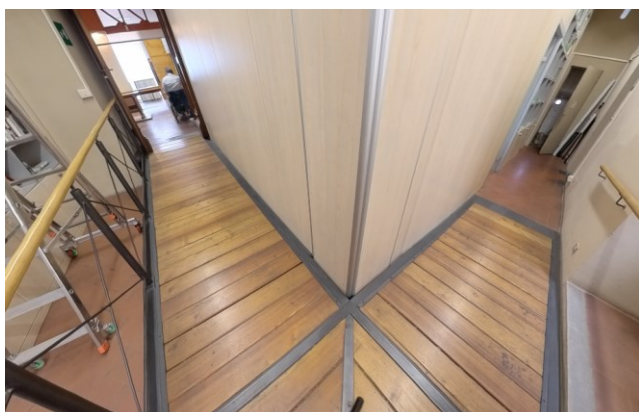


Here you can retrace the entire artistic history of Pistoia from the twelfth to the twentieth century through over 300 works including paintings, sculptures and art objects (goldsmiths, glass, ceramics) In the first two rooms, accessible on the floor, there are the oldest works, or panels with paintings ranging from the thirteenth to the sixteenth century. These include: *St. Francis, stories of his life and miracles after death, Lamentation of Christ, and Madonna and Saints*, The section of sixteenth-century works, also on the first



The path continues in the mezzanine, which can be reached by elevator and a first ramp 254 meters long with a slope of 5/6% and handrails on both sides.





Next we find a double ramp interrupted by a horizontal shelf: the first ramp 274 cm long, > 90 cm wide, 4 % slope, the second 410 cm long ramp, 4.5% slope, both with a width > 90 cm and handrail on the right



On the Mezzanine there is the **Giovanni Michelucci Documentation Center** (Pistoia 1891 - Florence 1990), dedicated to the great architect and urban planner from Pistoia, a space for educational activities and meetings/conferences and a reading area. The windows of the mezzanine offer a view of Piazza del Duomo-





The museum itinerary continues on the second floor.
Exiting the elevator on the left we find the first room accessible via a 139 cm long ramp, 14% slope.

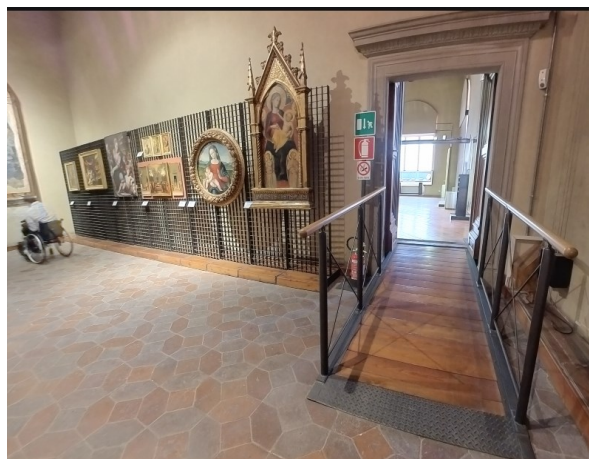


On the second floor there are works attributable to Florentine and Pistoia painting of the seventeenth and eighteenth centuries, as well as an important nucleus from the collection of the Puccini family, with paintings made between the fourteenth and nineteenth centuries

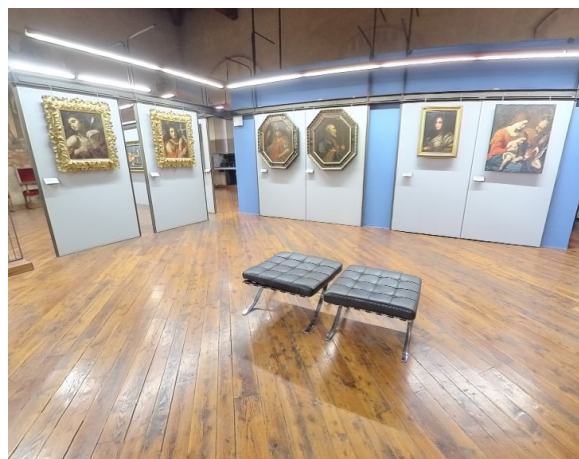




On the second and last floor of the building, seventeenth- and eighteenth-century Florentine painting and nineteenth-century painting of historical subjects and romantic taste, inspired by the liberal ideologies of the patron, Niccolò Puccini, are also well represented.



In the museum itinerary that winds through the second floor, the rooms are accessible on the floor except for the one in the photo accessible via a 310 cm long ramp, with a slope of 6%, and equipped with handrails on both sides





Services

Additional elements

Guided tours for groups	The staff on duty is able to accompany the visit. For guided tours carried out by qualified operators, it is possible to contact the authorized tourist guides of the provincial territory, on the relevant page of the Tuscany Region website and by clicking on the Province of Pistoia
Guided tours for individuals	NO
Activities for children and families	YES
Guided tours with trained staff	<input type="checkbox"/> in sign language <input type="checkbox"/> for visitors with reduced mobility <input type="checkbox"/> in Facilitated Language (AAC)

Toilets for guests with reduced mobility

Number of accessible toilets for guests with reduced mobility	1
Location	First floor near the museum and municipal offices
How to access the premises	<input checked="" type="checkbox"/> flat
Usable width of the entrance door	Above 80 cm
Toilet height	50 cm
Toilet seat with open front tooth	YES
Support handles	on both sides
Flexible shower on the side of the toilet	YES
Free space on the sides of the toilet	left 25 cm right Above 90 cm





	frontal Above 90 cm
Electric doorbell/telephone	YES
Washbasin with space underneath for wheelchair approach	Above 65 cm
Baby changing table	NO
Eventual notes	
	

Medical practices/healthcare facilities

Hospitals near the property	San Jacopo Hospital Via Ciliegiole, 97, 51100 Pistoia PT tel +390573 3521
Other healthcare facilities	

TESTED BY: [Handy Superabile Social Promotion Association](#) in 2024

